

User manual

Eurospray XL

Réf. 51300



EUROPRO

EUROPE PROJECTION - 228, avenue Olivier Perroy 13790 ROUSSET - Tél : +33 (0)4 42 29 08 96
SAS au capital de 400 000 € - RCS Aix-en-Provence B 394 961 510 - NAF 2892 Z - Intracom : FR 54 394 961 510

Edition of 08/02/2024

More information on www.euromair.com

You just acquired one of our machines and all the team of Europe Projection thanks you for the confidence you have granted us.

Manufacturer of professional equipments for paint and fillers, we have put our know-how for 30 years at the service of the users of our machines.

Our technical & commercial team is at your disposal for any further information you may need about the machine you just acquired.

EUROPE PROJECTION

228, avenue Olivier Perroy
13790 ROUSSET
Tél : +33 (0)4 42 29 08 96
contact@euromair.com

SUMMARY

1. USER MANUAL.....	p. 3
1.1. Importance of the manual	p. 3
1.2. Receivers of the manual	p. 3
2. WARNING	p. 4
2.1. Safety	p. 4
2.2. Electric connection	p. 6
2.3. End-of-life of the product.....	p. 6
3. YOUR MACHINE	p. 7
3.1. Description	p. 7
3.2. Technical characteristics	p. 7
3.3. Identification of the components	p. 8
4. USE OF THE MACHINE	p.11
4.1. Prerequisites	p.11
4.2. Preparing the work area.....	p.11
4.3. Preparing the machine	p.12
4.4. Preparing the product to be sprayed.....	p.13
4.5. Starting up.....	p.14
4.6. Spraying technique	p.15
4.7. Unclogging the tip	p.17
4.8. Stopping work	p.17
5. MAINTENANCE.....	p.18
5.1. Cleaning procedure.....	p.18
5.2. Defects and remedies	p.19
5.3. Error codes.....	p.20
6. DECLARATION OF CONFORMITY.....	p.21
7. WARRANTY CONDITIONS.....	p.22

1. USER MANUAL

1.1. IMPORTANCE OF THE MANUAL

This manual is a key part for the use of your machine. It summarizes the procedures of starting-up, cleaning and maintenance of the device and also the safety instructions you need to observe.

Read carefully all the working and safety instructions and the warnings included in this manual before starting your machine.

Most of the accidents are caused by the non-compliance of the safety standards and rules.

This manual must be kept near the machine, within reach of the user and held in good condition until the final destruction of the machine.

In case of loss or deterioration of the manual, you can ask the machine manufacturer mentioned on page 4 for a copy at any moment.

1.2. RECEIVERS OF THE MANUAL

This manual is intended to any staff which will manipulate the machine :

- people in charge of the transport of the machine
- people in charge of the use of the machine
- people in charge of the cleaning and maintenance of the machine
- people in charge of the final destruction of the machine

2. WARNING

2.1. SAFETY

Using the machine in an incorrect way or in non-compliance of the safety instructions indicated in this manual can cause death or serious injuries.

Read carefully all the working and safety instructions and the warnings contained in this manual before starting your machine.



- Respect all the safety standards before running the equipment.
- Use the equipment only for the applications specified in the manual.
- Always remain alert when using the equipment.
- Transport the machine using the handles or the appropriate grips.
- During the breaks, disconnect electrically the machine.



- Run the equipment to its nominal voltage.
- Let at least 50 cm of free space between the equipment and any obstacle so that the air flow is not blocked.
- Know how to quickly stop the equipment in case of necessity.
- Never use the equipment while it is running abnormally or it is defective.
- Do not direct a water jet or flammable liquid on the machine.
- Never direct an air jet or product jet on a person or an animal.
- Do not touch warm surfaces of the equipment.
- Never touch moving parts.
- Do not insert any object or the hands inside the protection grids to avoid any accident or damage to the machine.
- For any outside job, only use appropriate extension cords.



- Always wear adequate body protections (glasses, gloves, overall and mask) and pay attention to long hair.



- Maintain the equipment carefully and clean it properly after every use.
- Disconnect the equipment before any intervention.
- Avoid absolutely to unscrew any connection while the machine is under pressure.
- Check the damaged parts.
- Do not clean the plastic parts with solvent.
- In case of damage of the electric cable or the plug, do not run the machine and contact a licensed After-Sale Service to put genuine parts instead of the defective ones.
- In case of needed After-Sale Service, always specify the machine model and its serial number.
- For any replacement of parts, only use genuine parts.



- Do not modify the machine.
- Do not cut or dismantle the protection grids.
- Do not open the electric box.

2. WARNING

2.1. SAFETY

WORKSPACE

- Maintain the workspace clean and clear.
- Ambient operating temperature must be from 5°C and 35°C.
- Do not use the equipment in a potentially explosive area.
- Do not place any potentially inflammable objects in close proximity to the machine.
- Take away every not qualified person from the working area of the machine, as well as children and animals.
- In case of installation of the machine on scaffolding or a plan above ground level, attach the machine to avoid any fall while operating.
- Do not install the equipment on an inclined surface to avoid the risks of unexpected moves or falls.

HOSES

- Always use hoses and connections adapted to the used product (genuine parts), do not try to fix it.
- Do not walk on the hoses, do not bend them.
- Do not use the hoses to pull the machine.

STORAGE

- Keep the equipment in a clean and clear area in which the temperature does not exceed +35°C.
- After every use, necessarily grease the pump with a mixture of water + storage liquid to avoid it blocking up. The storage of a not greased pump can damage it seriously.

IN CASE OF NECESSITY, WE SAVE OURSELVES THE RIGHT TO MAKE ANY USEFUL MODIFICATION WITHOUT ADVANCED NOTICE.

2. WARNING (continued)

2.2. ELECTRIC CONNECTION



The electric connection of the machine must be on a 16A - 230V plug with a differential circuit breaker.

Before any intervention on the machine, make sure that every energy supply is cut (air and electricity).

GROUND CONNECTOR

All the machines must be connected to the ground when they work to protect the operator from electric shocks. Our machines are all equipped with standardized connection plugs.

Electric connection must be made by a qualified technician. It is forbidden to modify or dismantle the machine, especially the electric box.

Repairs must be made by an authorized center or our After-sale Service.

During any intervention on the machine, make sure that the ground is well reconnected.

EXTENSION CORDS

During the use of an extension cord, make sure that it is not crushed or damaged and that it contains a ground. Check that the section of the used extension cord is sufficient to support the machine when it is working. A too thin extension cord can cause voltage drops or overheating of the machine.

In case of use of a cable reel, it is imperative to unwind it entirely, otherwise, the equipment can be damaged. The section must be proportional to the length of the cord.

2.3. END OF LIFE OF THE PRODUCT



At its end-of-life, the machine must not be eliminated with the other household waste. The uncontrolled elimination of waste can harm the environment or human health. Individuals are invited to contact the distributor which sold them the product or to inquire with their city hall to know where and how to get rid of the product so it can be recycled while respecting the environment.

Under the regulation of Waste of Electrical and Electronic Equipments (WEEE), we undertake to process the used EEES according to the following provisions: applicable only to products on the market since 08/13/05, under the brands EUROPE PROJECTION or VOLUMAIR, products of other brands sold by our company (upon presentation of the corresponding invoices), products that operate using electrical energy (for example, thermal washers or compressors do not fall into this category).

Treatment modality

WEEE returns collected by our clients/distributors at their own expense to our collection points in Antony (92) or Rousset sur Arc (13). Upon receipt, the products are sorted by our employees and directed to the most appropriate processing channels.

For any further information, please contact our hotline +33 4 42 29 08 96 or conseil@euromair.com.

3. YOUR MACHINE

3.1. DESCRIPTION

Powerful, ergonomic airless sprayer designed for applying paint and ready-to-use film plasters on large worksites.

Its large-diameter wheels make it easy to transport and handle. The retractable arm makes it easy to roll up the hose.

It's very practical on site: quick-release pump, tilting stand, carrying handles, accessible controls, etc.

APPLICATIONS

Water-based or solvent-based paints: lacquers, woodstains, varnishes, primers, ceiling mattes, disinfectants, enamels, wood treatment, etc.

Ready-to-use film-plasters.



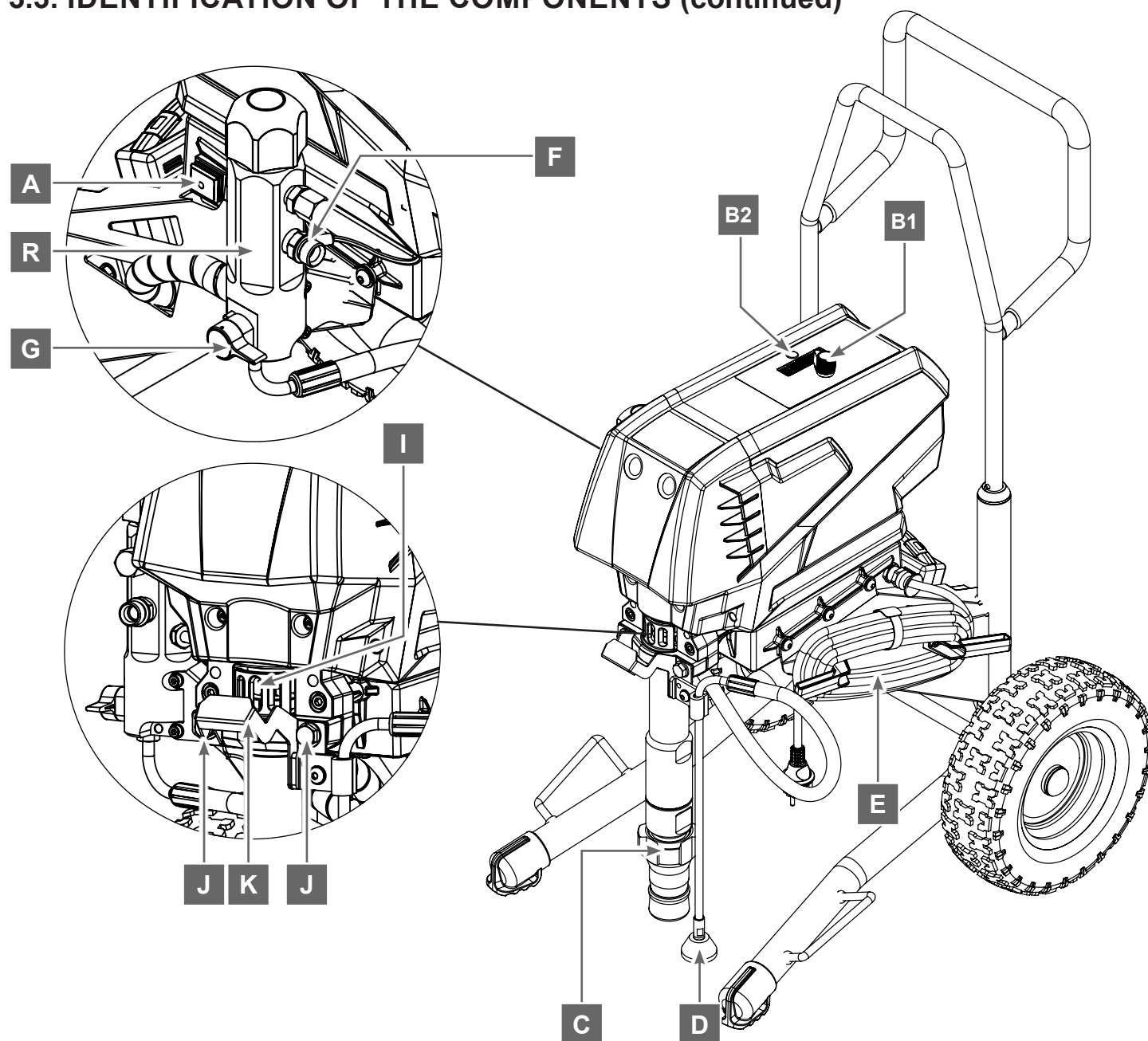
Do not use abrasive products, acids, alkalis, combustible products, facade paints, etc.

3.2. TECHNICAL CHARACTERISTICS

Max. working pressure	220 bar
Max. product flow rate	6,5 L/min
Power	3 kW
Supply	230 V / 50-60 Hz
Max tip (new)	0,039"
Dimensions (L x w x h)	68 x 61 x 85 cm
Weight	56 kg
Delivered with	<ul style="list-style-type: none">- a Ø3/8" x 15 m hose, 250 bar- a CoatSpray gun with tip holder- a 417 standard tip- a 100 mL bottle of oil for piston pump- a case containing :<ul style="list-style-type: none">• a Ø3 Allen key• a 17/19 open-end spanner• a 19/22 open-end spanner

3. YOUR MACHINE (continued)

3.3. IDENTIFICATION OF THE COMPONENTS (continued)

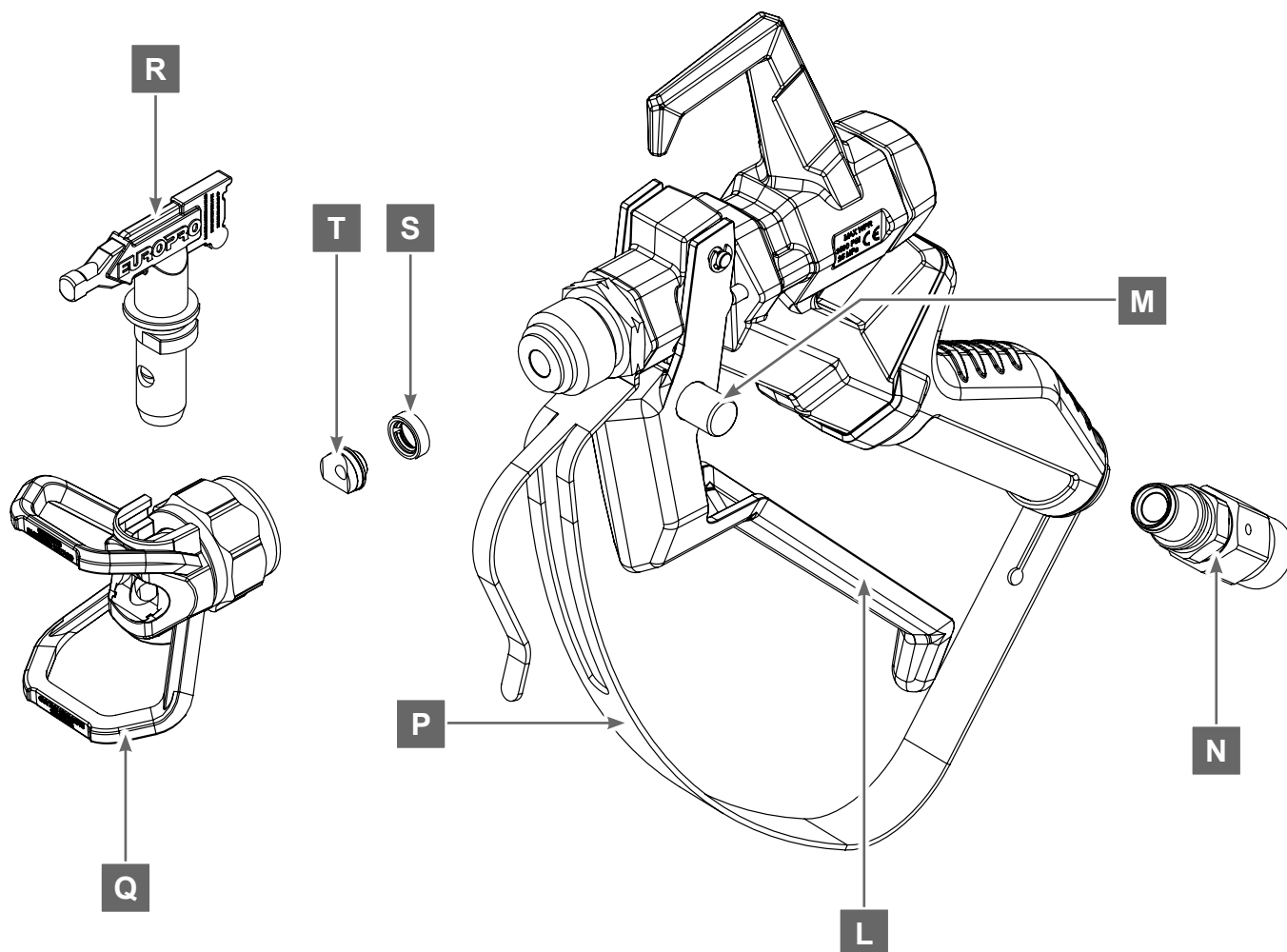


A	On/off switch
B	Potentiometer
B	Display selection button
C	Product suction rod
D	Return hose
E	Power cable
F	Product outlet connector
G	By-pass valve
H	Pump filter
I	Pump lubrication slot
J	Pump removal nuts
K	Bucket support

3. YOUR MACHINE (continued)

3.3. IDENTIFICATION OF THE COMPONENTS (continued)

COATSPRAY SPRAY-GUN

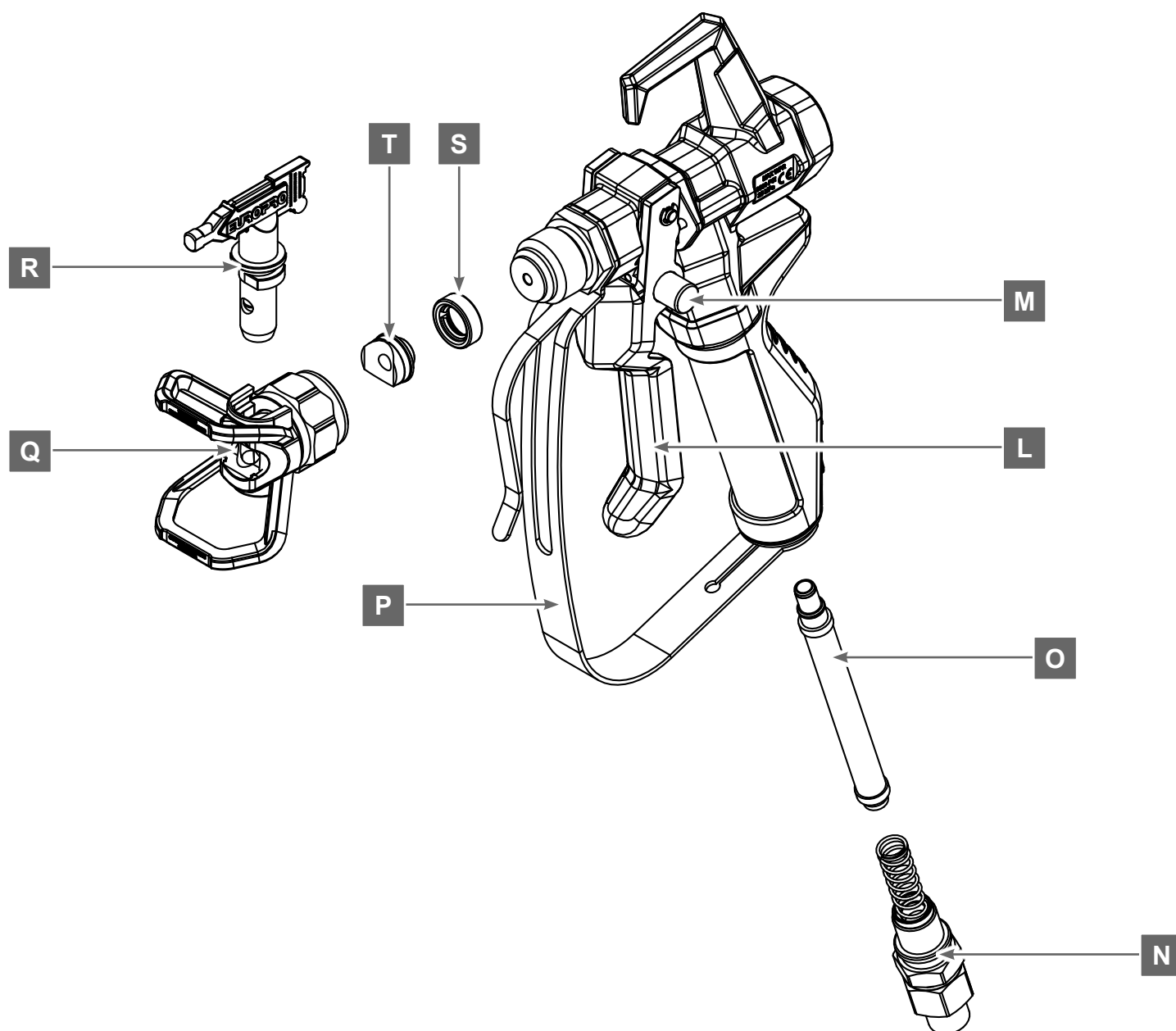


L	Trigger
M	Trigger locking pin
N	Product inlet connector
P	Trigger protection
Q	Tip support
R	Tip
S	Tip gasket
T	Tip seat

3. YOUR MACHINE (continued)

3.3. IDENTIFICATION OF THE COMPONENTS (continued)

PAINTSPRAY SPRAY-GUN (OPTIONAL)



L	Trigger
M	Trigger locking pin
N	Product inlet connector
O	Grip filter
P	Trigger protection
Q	Tip support
R	Tip
S	Tip gasket
T	Tip seat

4. USE OF THE MACHINE

4.1. PREREQUISITES

- The electric connection has to be 230 V - 16 A - 50 or 60 Hz with a 3 x 2,5 mm² cable reel of 40m maximum, completely unreeled.

THERMAL PROTECTION

- The machine is equipped with a thermal protection which stops the motor in the event of overheating. If this happens, the display on the housing will show an error code (**see 5.3. Error codes**).

TOOLS REQUIRED FOR USE

- A mallet.
- An empty receptacle.
- A large piece of cardboard.
- Masking kit (protective film + adhesive).

DISPLAY

- By default, the display on the machine housing shows the working pressure in bar. Press the SELECT button to obtain further information:

Default	1 st press	2 nd press	3 rd press	4 th press	5 th press
Pressure (in bar)	Pressure (in psi)	Operating time (in hours)	Motor temperature (in °C)	Last error code recorded	Return to default display

4.2. PREPARING THE WORK AREA

- When spraying, a mist may form. Use the masking material to cover all the areas and objects to be protected or remove them from the spraying area if possible (door and window frames, furniture and objects, electrical sockets and switches, etc.).



Any penetration of the sprayed product into an electrical socket or switch could lead to an electric shock which could cause serious injury and/or damage.



If a product containing silica is used, ensure that glass or ceramic surfaces that could be damaged by such a product are properly masked.



Avoid using masking tape that is too strong on sensitive areas (wallpaper, painted surfaces) to avoid damaging them when the tape is removed.

4. USE OF THE MACHINE (continued)

4.3. PREPARING THE MACHINE

ASSEMBLY

1. Screw the hose onto the high-pressure filter support (F) using the spanners supplied.
2. Screw the other end of the hose onto the spray gun connector.
3. Fit the tip gasket (S) and tip seat (T) into the tip support, then screw the tip support onto the spray gun and screw it in as far as it will go to secure it.

CONTROLS

- The on/off switch (A) is located on the machine side.
- The 2-position valve (G) is located near the high-pressure filter:
 - Vertical position (priming)**
 - ▶ Preliminary filling of the product circuit.
 - ▶ Pressure release.
 - Horizontal position (spraying)**
 - ▶ Spraying onto the surface to be covered.
- The potentiometer (B1), located on the housing, is used to adjust the spraying pressure according to the product and the work to be carried out and to start the motor for pumping.

SPRAY GUN



The trigger must always be locked when the gun is not in use or for any manipulation on the gun (tip change, repair, etc.).

- To lock or unlock the spray gun trigger, press the locking pin (M) (trigger released).
- The tip must be inserted with the point facing forward.
- Replacement of the filter in the gun grip: **(PaintSpray spray-gun only)**
 - Release the trigger protection.
 - Unscrew the product inlet connector and pull the grip downwards to release the filter and remove it.
 - Install the new filter in its place, pierced side up.
 - Refit the handle in reverse order.



**The filter must be replaced without any pressure in the gun.
Carry out a pressure relief (see next page) before this operation.**



Depending on the product to be sprayed, it may be necessary to change the size of the tip and/or the grip filter.

4. USE OF THE MACHINE (continued)

4.3. PREPARING THE MACHINE (continued)

PRESSURE RELIEF



It is essential to release the pressure from the hose and gun when the machine is switched off (for any reason). This procedure avoids the risk of injury when resuming work.

1. Lock the gun trigger.
2. Switch off the machine (button (A) in position 0).
3. Turn valve (G) to vertical position.
4. Unlock the trigger, place the gun over an empty container, then press the trigger to release the pressure.
5. When all the pressure has been released, lock the trigger again.

4.4. PREPARING THE PRODUCT TO BE SPRAYED

- To ensure optimum atomisation of the product, it is important to dilute it if necessary in accordance with the manufacturer's dilution recommendations (refer to the technical data sheet for the product to be sprayed).
- Mix the product (by hand or using a portable mixer) and dilute it directly into the bucket.

DILUTION RECOMMENDATIONS

Products	Dilution
Water-based or solvent-based paints	from 5 to 10%
Wall paints (water-based or solvent-based)	from 0 to 10%
Varnishes	none
Wood protection products, oils, stripping products, disinfectants, phytosanitary products	none
Ready-to-use film-plasters	none



The values given in the table above are for guidance only. Dilution must comply with the recommendations on the product packaging and can be adjusted by carrying out spray tests (see *Spraying technique* section).

4. USE OF THE MACHINE (continued)

4.5. STARTING UP



When using the machine for the first time, start it up with water to check that it is working properly and to remove any impurities.

1. Lubricate the pump using the burette supplied (through the slot (I)).
2. Disconnect the return hose (D) from the suction rod (C).
3. Place the return hose (D) in an empty bucket and the suction rod in the bucket of product to be sprayed (or water for the first use).
4. Plug the machine into the mains.



Before connecting the machine to the mains, check that the voltage is suitable for the machine's needs.

5. Turn the valve (G) to the vertical position (priming).
6. Set switch (A) to position I to switch on the machine.
7. Adjust the pressure using the potentiometer (B1), suction will start.
8. As soon as the product flows into the empty container through the return hose, stop the machine (potentiometer on 0).
9. Attach the return hose to the suction rod.
10. Turn the valve (G) to the horizontal position (spraying).
11. Point the spray gun at a piece of cardboard and start the machine using the potentiometer.
12. Unlock the spray gun and press the trigger to spray the cardboard until the product comes out evenly.
13. Release the trigger and lock the gun.
14. When the red light on the control panel is on, the machine is ready to work.

4. USE OF THE MACHINE (continued)

4.6. SPRAYING TECHNIQUE



Make sure that the hose is not pinched or bent and that it is not in contact with objects with sharp edges that could damage it.



It is advisable to carry out test sprays on a piece of cardboard to obtain the optimum spray pattern and to familiarise yourself with the use of the gun.



During use, it is normal for the pump to stop and restart. This is a matter of pressure regulation and not a malfunction of the machine.



If the product dilution and pressure setting are correct, the product jet will be regular.



If the product jet shows irregularities or spray cords :

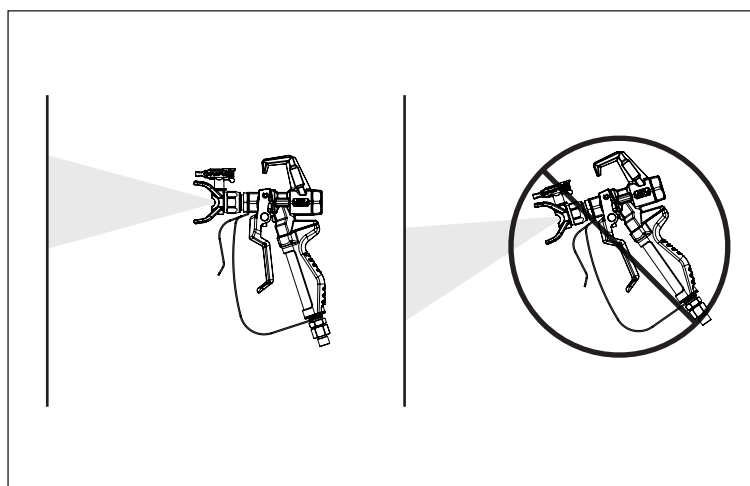
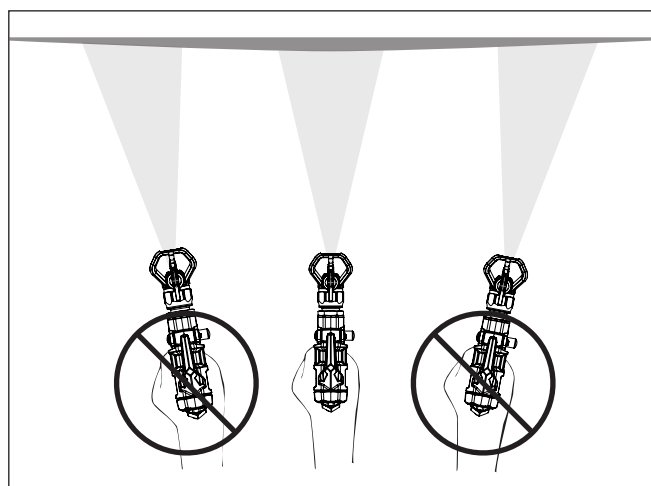
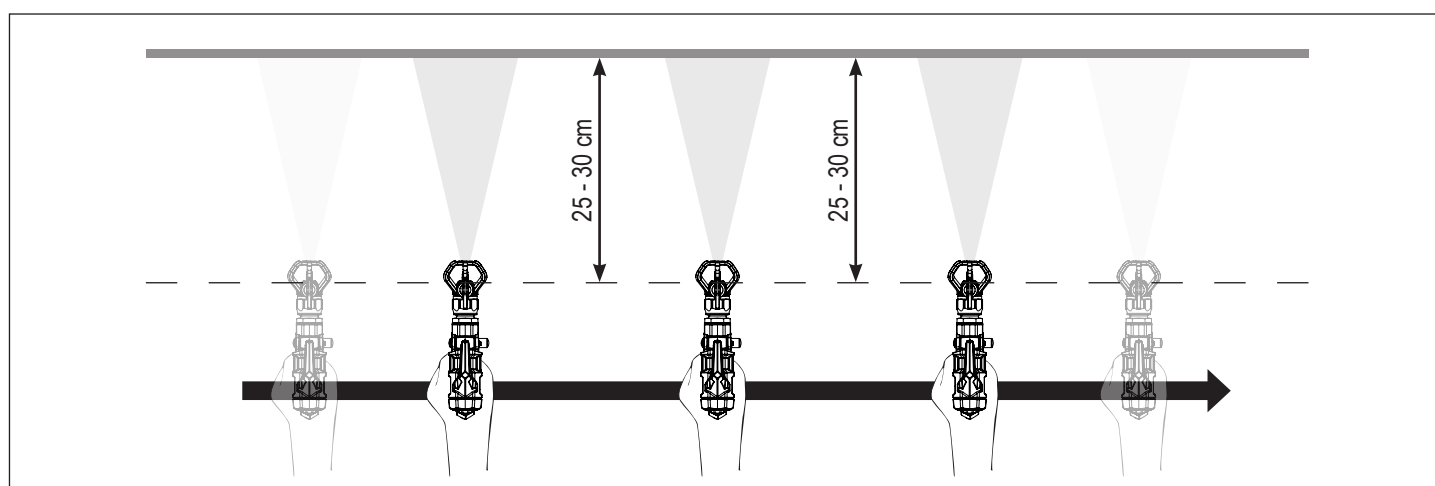
- Increase the pressure gradually.
- Dilute the product further (in 5% increments, without ever exceeding the dilution limit recommended by the product manufacturer).
- Reduce the tip size.

4. USE OF THE MACHINE (continued)

4.6. SPRAYING TECHNIQUE (continued)

To achieve optimal results, the surface must be covered as evenly as possible, using the right gestures:

- The arm must move at a regular speed, without interruption, and the distance between the gun and the surface to be covered must be constant (25 to 30 cm).
- Press the trigger only after starting the gun movement and release it before ending the movement.
- To obtain an even coverage, overlap the strokes by approximately 30%.
- Move your whole arm, not just your wrist, to limit irregularities.
- The spray gun should be perpendicular to the surface to be covered to avoid differences in the thickness of the product layer.



4. USE OF THE MACHINE (continued)

4.7. UNCLOGGING THE TIP

If, during spraying, the product jet becomes distorted or stops completely, the tip may be blocked. In this case, proceed as described below.



**Never try to unclog the tip with your fingers.
The pressurised product can cause serious injection injuries.**

1. Lock the gun trigger.
2. Turn the tip 180° in the tip support (with the tip pointing towards the back of the gun).
3. Place valve (G) in horizontal position.
4. Unlock the gun and press the trigger (gun pointing towards a cardboard box). The pressure in the hose will remove the obstruction.
5. When the tip is unclogged, the product jet becomes straight and regular again. Release the trigger and lock the gun.
6. Turn the tip back to its original position (pointing forward) and resume spraying as normal.

4.8. STOPPING WORK



Carry out a pressure relief (see 4.3.) after stopping the machine and before carrying out any work on it.

- Stop the machine (switch (A)), then disconnect the power cord (E).
- Place the gun in a plastic bag and seal the bag.
- Use a little water to lightly dampen the surface of the product in the bucket. This prevents a layer of dried product forming.

5. MAINTENANCE

5.1. CLEANING PROCEDURE



The machine must be cleaned immediately after each use to ensure optimum performance. Dried product residues can cause malfunctions.



Never use a combustible product for cleaning.

1. Carry out the pressure relief procedure (see 4.3.).
2. Lock the gun trigger.
3. Remove the tip holder.
4. Place the suction tube and return hose in a bucket of water (or a solution suitable for cleaning the product).
5. Turn the valve (G) to the horizontal position, then set the pressure to maximum with the potentiometer (B1).
6. Point the gun at an empty container.



If rinsing with a solvent, use a metal container placed on the floor and maintain contact between the gun and the container.

7. Unlock the gun and press the trigger until the water (or solvent) comes out clean from the gun.
8. Stop the machine and disconnect the power cable.
9. Turn the valve (G) to the vertical position.
10. Pull the trigger to release the pressure, then lock the gun.
11. Remove the gun from the hose using the spanners supplied.
12. Dismantle the connector (N) and remove the grip filter.* (*PaintSpray spray-gun only*)
13. Clean the grip filter using a soft brush and a suitable product.*
14. Refit the clean filter (pierced side up) and refit the gun grip.*
15. Clean the tip holder, seal, seat and tip.
16. Replace the gasket and seat in the tip holder and refit it to the gun.
17. Pinch the hook to remove the suction pipe (C) and clean it with a cloth.
18. Also clean the return hose (D) with a cloth.
19. Remove the hose from the connector (F) using the spanners supplied.
20. Pour approximately 60 ml of cleaning and storage liquid into the bucket of water (respecting the dilution indicated on the bottle), then plug in the power cord.
21. Switch on the machine and run it for a few seconds so that the liquid flows into the circuit and preserves it until the next time it is used (place a cloth over the connector (F) to prevent the liquid dripping onto the floor).

***PaintSpray spray-gun only.**

5. MAINTENANCE (continued)

5.2. DEFECTS AND REMEDIES

Defects	Causes	Remedies
The machine does not start.	The machine is not plugged in.	Plug in the power cable.
	The machine is stopped.	Turn switch (A) to position I.
	The machine has been switched off while under pressure.	Release the pressure, then return the valve (G) to the horizontal position.
	The mains plug does not supply any voltage.	Check the mains plug.
	The electric extension cable is unsuitable or damaged.	Change the extension cable.
	The machine is overheating.	See procedure 4.1.
	Motor fault.	Contact the After-Sales Service.
The machine runs but does not suck in product when the valve (G) is in the vertical position.	The machine does not prime.	Try to prime the machine again.
	The suction rod (C) is not fully immersed in the product bucket or the product bucket is empty.	Immerse the suction pipe in the product or replace the product bucket.
	The suction rod is blocked.	Clean the suction pipe.
	The suction rod is not fitted correctly.	Pinch the hook to dismantle the rod and reassemble it correctly.
	Ball(s) stuck.	Unblock.
	Valve (G) is blocked.	Contact the After Sales Service.
The machine sucks in product but, when the gun is activated, the pressure drops.	The tip is worn.	Replace the tip with a new one.
	Pump filter (H) clogged.	Unscrew the cover and remove the filter to clean it.
	Gun filter (O) clogged.	Clean or replace the filter.
	Product not sufficiently diluted.	Dilute the product further.
	Impurities in the product.	Filter the product.
	Ball(s) stuck	Unblock.
The gun is leaking.	Some parts of the gun are dirty or worn.	Contact the After Sales Service.
The tip support is leaking.	The tip is incorrectly fitted.	Remove the tip and refit correctly.
	The seal is worn.	Clean the seal.
The gun does not work.	The gun or tip are blocked.	Clean the filter (O) or the tip.
	The tip is mounted upside down.	Replace the tip.
The product jet is dripping.	The product is too viscous or contains impurities.	Dilute the product further or filter it.
	Gun or tip clogged.	Clean the filter (O) or the tip.
	The tip is worn.	Replace the tip with a new one.
	Pump filter (H) clogged.	Unscrew the cover and remove the filter to clean it.
	Gun filter (O) clogged.	Clean or replace the filter.



**In case of an unknown defect or a doubt on the good running of the machine, do not try to repair it by yourself or to dismantle it.
Contact an authorized After-Sale Service or our hotline : +33 4 42 29 08 96.**

5. MAINTENANCE (continued)

5.3. ERROR CODES

The various error codes are displayed on the display on the housing.

Codes	Causes	Remedies
???u	Low voltage warning.	Unplug the machine and set the pressure control to minimum. Wait for the display to turn off. Reconnect and start the machine.
		Check the power cable.
		Connect to an electrical socket with sufficient power.
		Contact after-sales service.
E03	Damaged pressure sensor.	Clean the pressure sensor.
		Check that the sensor cable is properly connected.
		Replace the pressure sensor.
		Contact after-sales service.
E04	Control board overcurrent.	Check the power supply, try to connect to another socket.
		Increase tip size.
		Dilute the product (follow the manufacturer's recommendations).
		Replace the pressure sensor.
		Replace the control board.
		Contact after-sales service.
E05	Control board overheating.	Switch the machine off and wait for it to cool down.
		Check the electrical supply.
		Increase tip size.
		Contact after-sales service.
E12	Machine is running empty.	Check that the product bucket is full.
		Check that the product is not cavitating.
		Switch the machine off and restart.
E14	Motor blocked.	Check the electrical supply.
		Check that the product pump is not blocked (breakage or dry product).
		Contact after-sales service.
E15	General card error.	Switch the machine off and restart.
		Check the electrical supply.
		Replace the control board.
		Contact after-sales service.

6. DECLARATION OF CONFORMITY

THE MANUFACTURER : EUROPE PROJECTION
228, avenue Olivier Perroy
13790 ROUSSET

DECLARES THAT THE EQUIPMENT DESIGNATED BELOW:

Trademark : EUROPE PROJECTION

Type : Airless sprayer

Model : EUROSpray XL

COMPLIES WITH THE DIRECTIVES:

- Machines 2006/42/CE
- Low voltage 2014/35/UE
- CEM 2014/30/UE
- ROHS 2011/65/UE



ROUSSET, JANUARY 20th 2024

Patrick BOREL
President

EUROPE PROJECTION - 228, avenue Olivier Perroy 13790 ROUSSET
Tél : +33 (0)4 42 29 08 96 - www.euromair.com

SAS au capital de 400 000 € - RCS Aix-en-Provence B 394 961 510 - NAF 2892 Z - Intracom : FR 54 394 961 510

7. WARRANTY CONDITIONS

Each equipment is delivered inspected and tested.

We exclude any warranty for visible defects, not notified by the customer within 48 hours.

The equipment sold is guaranteed during the manufacturer's warranty from the date of purchase, as specified on the original proof of purchase, and under the conditions defined by the manufacturer.

This warranty covers any equipment against any manufacturing or material defect, under normal conditions of use. Insofar as the customer is presumed to be a professional of the same field of specialty, this warranty covers only the defect of conception of the equipment rendering it unfit for its use, which could not be detected by a professional buyer.

The defects or deteriorations caused by natural wear, external accident or a modification, use, storage or treatment of the equipment not planned by the manufacturer, nor specified by ourselves, are excluded from any warranty.

Are expressly excluded from the warranty the defects resulting from an improper use, the application of abrasive or corrosive products, an inappropriate installation, the negligence, an insufficient maintenance or cleaning, inappropriate conditions of storage, chemical, electronical or electric influences, any change in the normal process of use.

The following wearing parts are not covered by the warranty (non-exhaustive list): rotors, stators, driving shafts, connecting rods, seals, cleaning balls, spray guns, lance, nozzle, hose, needle kits, cylinders, piston rods, prime/spray valve assy, seal kits, membranes, suction and delivery valves, carding machine vanes, filters, oils, chains and quick-release clip.

The warranty also excludes the equipment on which the serial number was erased or made illegible, on which unauthorized people made attempts of repair, which were totally or partially dismantled.

Our equipment are covered by a manufacturer's warranty (parts and labor) of 12 months following the purchase date by the final customer, without exceeding 24 months from the date of purchase by the client.

This manufacturer's warranty shall automatically cease if the customer does not resell the equipment within 24 months of its purchase. The cases of exclusion of warranty mentioned in articles above are also applicable to our own equipment.

The manufacturer's warranty shall always be subject to the presentation of the purchase invoice.

If the defective equipment is covered by the manufacturer's warranty, it shall be repaired or replaced at our discretion free of charge.

If the defective equipment is not covered by the manufacturer's warranty, we shall issue a quote for the repair that we shall submit to the customer for approval.

Except as otherwise required by law, this manufacturer's warranty is exclusive of all other warranties, including the statutory warranty of hidden defects.

In case of intervention of our services on a breakdown caused by the customer or an incident excluded in the conditions referred to above, the costs of repair and transport shall be invoiced to the customer. We exclude all liability for indirect damages suffered by the customer, such as, but not limited to, loss of income, turnover, loss of profits, loss of image, of any kind whatever.

7. WARRANTY CONDITIONS (continued)

In all cases, our liability shall be limited to the amount paid by the customer for non-compliant equipment.

Any legal action of the customer against us relating to the warranty of the equipment shall be barred 1 year after the date of discovery of the defect. The customer shall have to prove the date of this discovery.

Request for Warranty

For any request related to the repair of an equipment covered by the manufacturer's warranty, the customer shall have to fill the warranty form, available on our website, under After-Sale Service.

For a full dossier, the following documents shall have to be attached:

- the purchase invoice of the final user
- pictures of the defective parts of the equipment
- a description of the breakdown
- the quote of labor if the customer is certified by EUROMAIR for repairing the equipment

No invoice of labor shall be taken into account without our prior approval.

Analysis of the breakdown by our technical department

A file number shall be given to the customer and an answer shall be provided within 48 working hours after reception, provided that the request for warranty is considered as full.

In the event the equipment is covered by the manufacturer's warranty, we shall confirm the warranty to the customer and send him a quote (without price) detailing the parts to be changed and any comments.

Return of replacement parts

Replacement parts must be ordered with a warranty agreement number and will be made available to the customer at our factory.

The conditions of return of the equipment are detailed in our Delivery terms.

In the case of a warranty claim on an on-board component such as a Kohler, Honda or Vanguard engine in a machine manufactured by us, only the manufacturer of the component is able to validate the warranty coverage.

In this case, the request must be addressed directly to the manufacturer of the component or to its nearest authorised representative. The Euromair, Euromair MPC or Mixer service centres may be considered as the manufacturer's representatives if they are the closest. As this principle also applies to batteries, our supplier Parts Holding Europe, or one of its sister companies, remains your contact for your requests (<https://www.partsholdingeurope.com/>).

EUROPRO

EUROPE PROJECTION - 228, avenue Olivier Perroy 13790 ROUSSET - Tél : +33 (0)4 42 29 08 96
SAS au capital de 400 000 € - RCS Aix-en-Provence B 394 961 510 - NAF 2892 Z - Intracom : FR 54 394 961 510

More information on www.euromair.com